



2010 PETITE SIRAH
Madden Ranch Vineyard
Livermore Valley

Greets the nose with blackberry and blueberry, complimented by firm tannins and a cherry, cocoa, spice, and black pepper palate. Full bodied, fruit driven and soundly structured. A truly unique, single vineyard Petite Sirah.

Double Gold Medal
SF Chronicle & Rhone
Shootout Competition



2010 PETITE SIRAH
Madden Ranch Vineyard
Livermore Valley

Greets the nose with blackberry and blueberry, complimented by firm tannins and a cherry, cocoa, spice, and black pepper palate. Full bodied, fruit driven and soundly structured. A truly unique, single vineyard Petite Sirah.

Double Gold Medal
SF Chronicle & Rhone
Shootout Competition



2010 PETITE SIRAH
Madden Ranch Vineyard
Livermore Valley

Greets the nose with blackberry and blueberry, complimented by firm tannins and a cherry, cocoa, spice, and black pepper palate. Full bodied, fruit driven and soundly structured. A truly unique, single vineyard Petite Sirah.

Double Gold Medal
SF Chronicle & Rhone
Shootout Competition



2010 PETITE SIRAH
Madden Ranch Vineyard
Livermore Valley

Greets the nose with blackberry and blueberry, complimented by firm tannins and a cherry, cocoa, spice, and black pepper palate. Full bodied, fruit driven and soundly structured. A truly unique, single vineyard Petite Sirah.

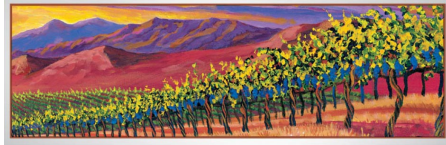
Double Gold Medal
SF Chronicle & Rhone
Shootout Competition



2010 PETITE SIRAH
Madden Ranch Vineyard
Livermore Valley

Greets the nose with blackberry and blueberry, complimented by firm tannins and a cherry, cocoa, spice, and black pepper palate. Full bodied, fruit driven and soundly structured. A truly unique, single vineyard Petite Sirah.

Double Gold Medal
SF Chronicle & Rhone
Shootout Competition



2010 PETITE SIRAH
Madden Ranch Vineyard
Livermore Valley

Greets the nose with blackberry and blueberry, complimented by firm tannins and a cherry, cocoa, spice, and black pepper palate. Full bodied, fruit driven and soundly structured. A truly unique, single vineyard Petite Sirah.

Double Gold Medal
SF Chronicle & Rhone
Shootout Competition



2010 PETITE SIRAH
Madden Ranch Vineyard
Livermore Valley

Greets the nose with blackberry and blueberry, complimented by firm tannins and a cherry, cocoa, spice, and black pepper palate. Full bodied, fruit driven and soundly structured. A truly unique, single vineyard Petite Sirah.

Double Gold Medal
SF Chronicle & Rhone
Shootout Competition



2010 PETITE SIRAH
Madden Ranch Vineyard
Livermore Valley

Greets the nose with blackberry and blueberry, complimented by firm tannins and a cherry, cocoa, spice, and black pepper palate. Full bodied, fruit driven and soundly structured. A truly unique, single vineyard Petite Sirah.

Double Gold Medal
SF Chronicle & Rhone
Shootout Competition